

PREDATION

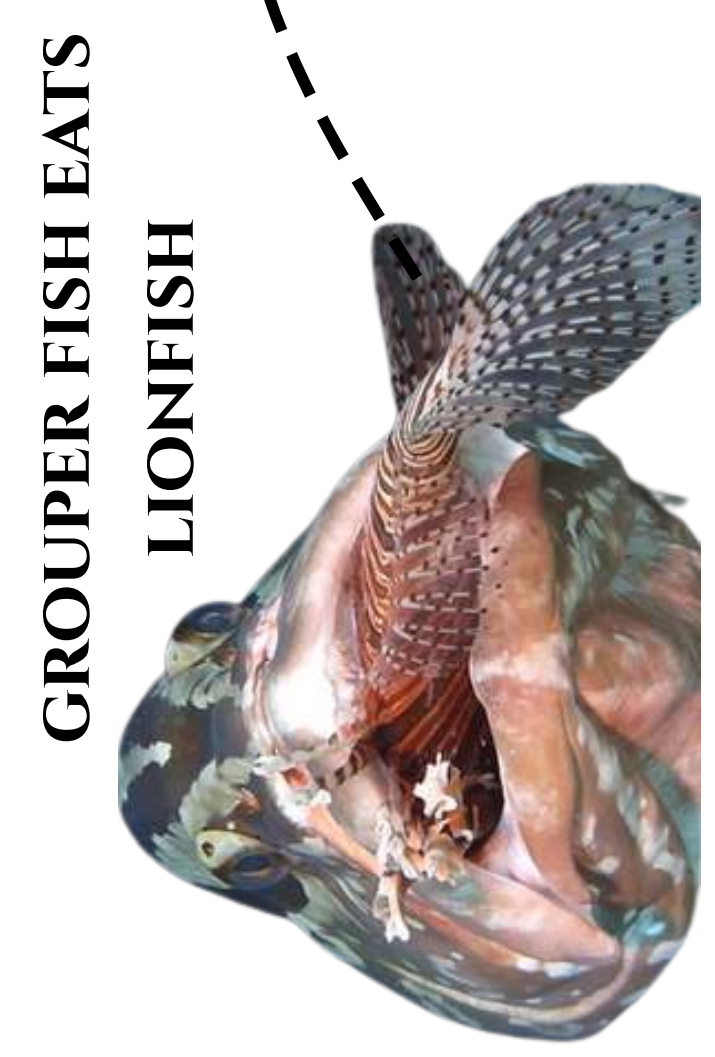
PARASITISM

COMPETITION

COMMENSALISM

MUTUALISM

BIODIVERSITY



GROUPER FISH EATS LIONFISH

A

LIONFISH EATS SMALL FISH



CLOWNFISH FIND SHELTER IN SEA ANEMONES; ANEMONES RECEIVE FOOD FROM CLOWNFISH'S WASTE



B

DEFINE THE RELATIONSHIP:

Each letter corresponds to a different ecological relationship.

- A _____
- B _____
- C _____
- D _____

BREAK DOWN THE WORD BIODIVERSITY

BIO _____ DIVERSITY _____

WHEN BIODIVERSITY DECREASES, STABILITY _____

WHEN BIODIVERSITY INCREASES, STABILITY _____

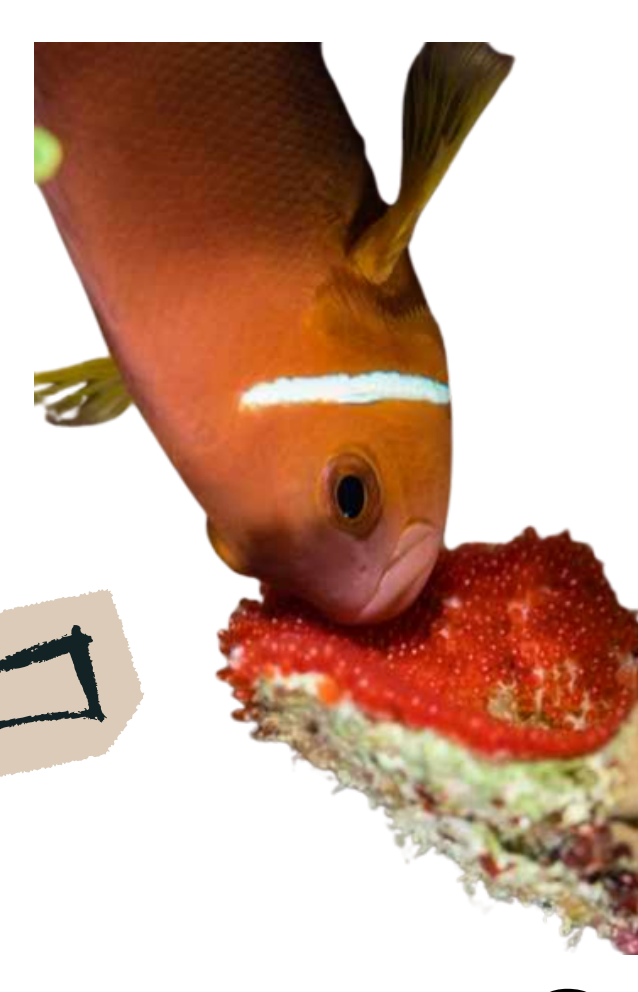


SHARK EATS LIONFISH

TONGUE-EATING ISOPOD ENTERS A FISH'S MOUTH, DESTROYS ITS TONGUE, AND REPLACES IT



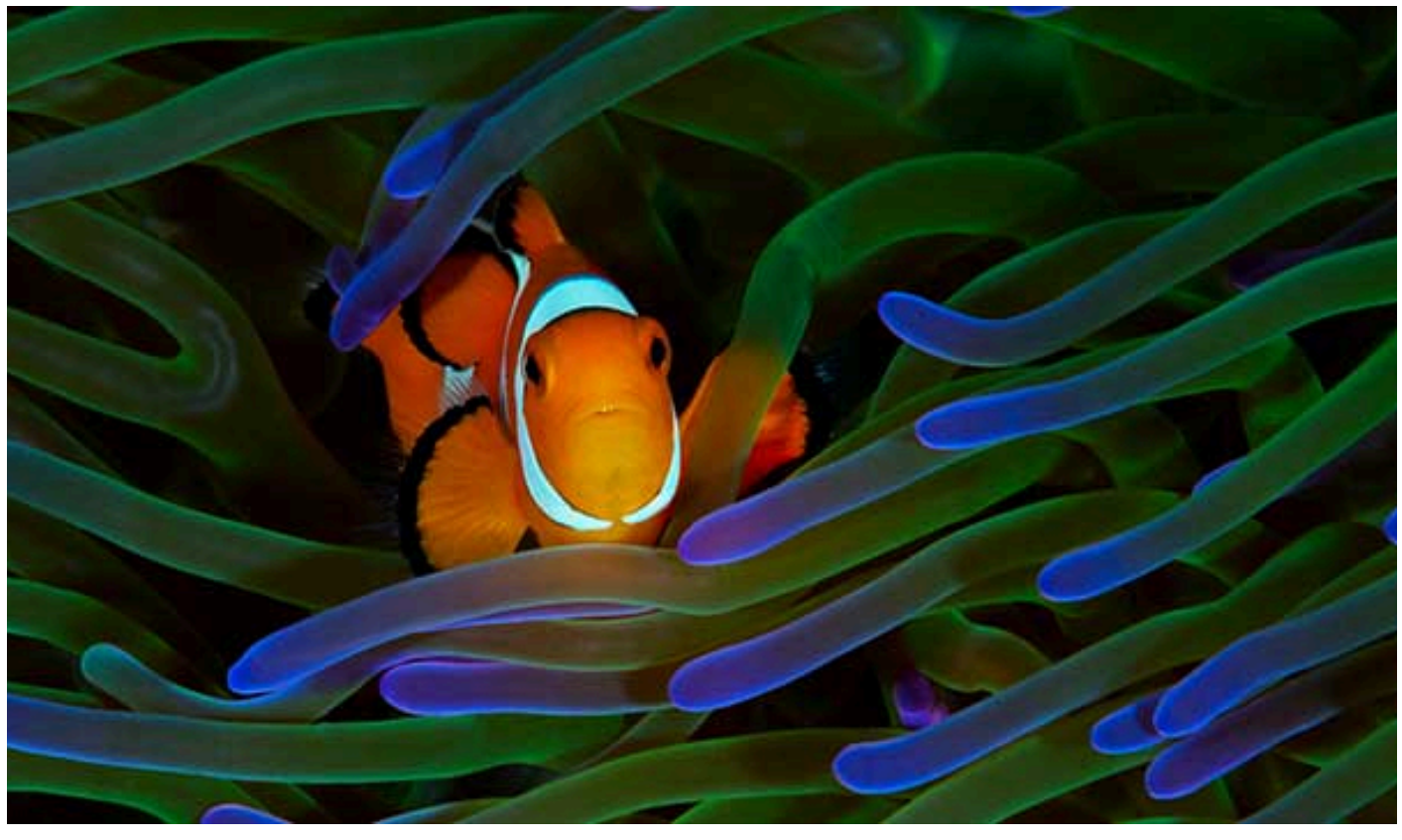
C



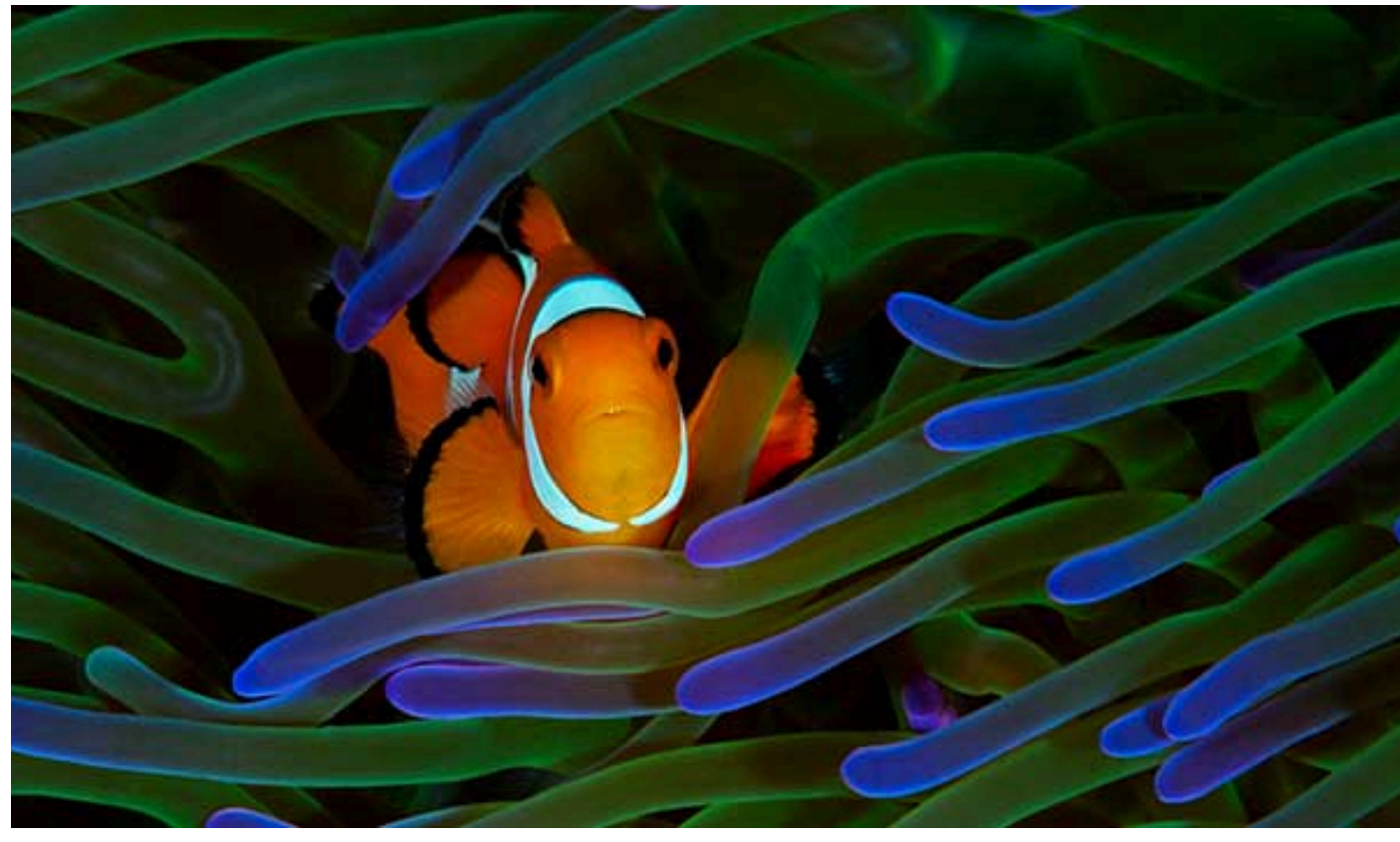
CLOWNFISH EATS ZOOXANTHELLAE

D

CLOWNFISH FIND SHELTER IN SEA ANEMONES;
ANEMONES RECEIVE FOOD FROM CLOWNFISH



CLOWNFISH FIND SHELTER IN SEA ANEMONES;
ANEMONES RECEIVE FOOD FROM CLOWNFISH



CLOWNFISH FIND SHELTER IN SEA ANEMONES;
ANEMONES RECEIVE FOOD FROM CLOWNFISH



SEA LAMPREY LATCH ONTO FISH,
SCRAPING SKIN AND FEEDING ON BLOOD



SEA LAMPREY LATCH ONTO FISH,
SCRAPING SKIN AND FEEDING ON BLOOD



SEA LAMPREY LATCH ONTO FISH,
SCRAPING SKIN AND FEEDING ON BLOOD



CORAL AND SPONGES FIGHT FOR SPACE IN
THE REEF



CORAL AND SPONGES FIGHT FOR SPACE IN
THE REEF



CORAL AND SPONGES FIGHT FOR SPACE IN
THE REEF



REMORA FISH ATTACH TO A SHARK
FOR TRANSPORTATION AND FOOD
SCRAPS



REMORA FISH ATTACH TO A SHARK
FOR TRANSPORTATION AND FOOD
SCRAPS



REMORA FISH ATTACH TO A SHARK
FOR TRANSPORTATION AND FOOD
SCRAPS



WHALE SHARKS EAT SMALL FISH AND
KRILL



WHALE SHARKS EAT SMALL FISH AND
KRILL



WHALE SHARKS EAT SMALL FISH AND
KRILL

