

## Installing EnvivioTV plug-in for QuickTime Player, RealPlayer or Windows Media Player manually

---

**NOTE**

---

To get EnvivioTV installer, please contact your sales person.

1. Launch EnvivioTV installer.

---

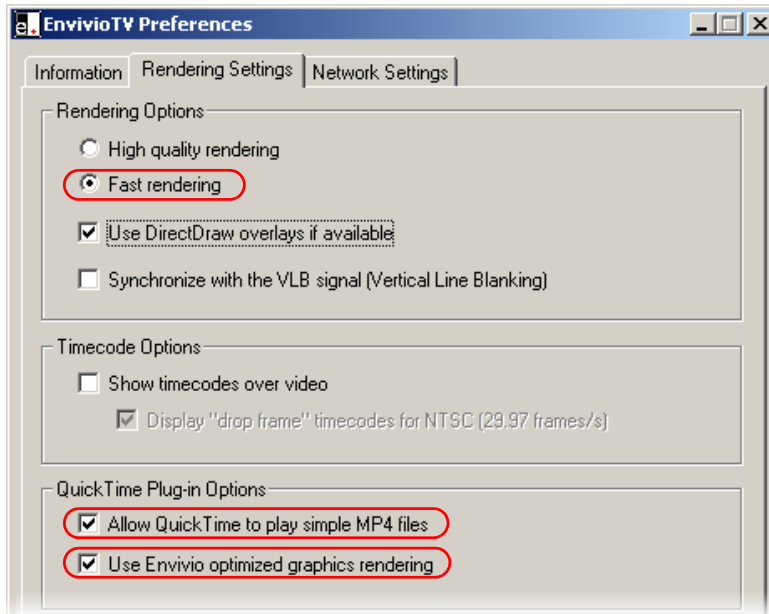
**CAUTION**

---

At least, one player (QuickTime Player, RealPlayer or Windows Media Player) must be installed before installing the EnvivioTV plug-in.

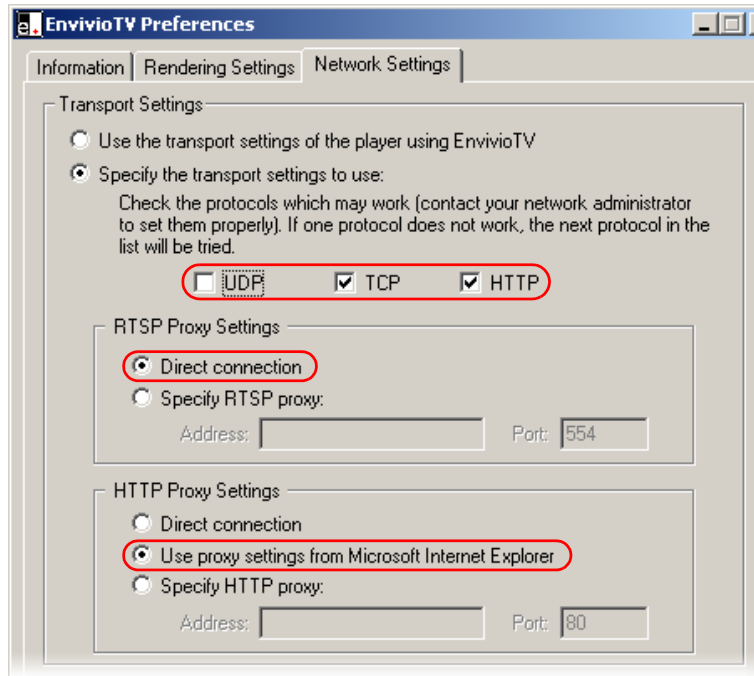
2. During the installation, the program automatically detects if you have QuickTime Player, RealPlayer or Windows Media installed. If several of them are installed on your system, you are asked to choose which EnvivioTV plug-in you want to install. You can install one plug-in or all of them.
3. You can configure EnvivioTV:
  - At the end of the installation process, if the EnvivioTV **Preferences** option is checked,
  - Or by opening the **Start>Programs>Envivio>EnvivioTV>EnvivioTV Preferences>** menu.
4. In **EnvivioTV Preferences>Rendering Settings** check **Fast Rendering**. In the **Quick Time plug-ins Options**, check **Allow Quicktime to play simple MP4 files** and check **Use Envivio optimized graphics rendering**.

Figure 1. EnvivioTV Rendering settings



5. In **EnvivioTV Preferences>Networks Settings**, choose **Specify transport settings to use**, uncheck **UDP** and check **TCP** and **HTTP**.
  - For RTSP proxy settings, check **Direct Connection**.
  - For HTTP proxy settings, check **Use Proxy settings from Microsoft Internet Explorer**.

Figure 2. EnvivioTV Network settings



## Installing EnvivioTV with the ETV automatic installer

When configuring 4Forum, if you select **Automatic installer** (see "Player settings" on page 107), the EnvivioTV plug-in or the EnvivioTV ActiveX control will be automatically installed on the end user's computer.

This automatic installer is triggered when the user views the live or on-demand presentations using links created by 4Forum. The web page checks whether the EnvivioTV plug-in is installed or needs to be upgraded to a newer version.

If the EnvivioTV plug-in is not installed the automatic installer is downloaded and a message prompts you that EnvivioTV will be installed.

The automatic installer also checks your existing player version. If the installed version is too old, it will suggest a link to update your players (QuickTime™ Player, RealPlayer or Windows Media™).

At the end of the installation, the user can check the EnvivioTV settings (see "EnvivioTV Rendering settings" on page 46 and "EnvivioTV Network settings" on page 47).

## Installing the EnvivioTV ActiveX control

The EnvivioTV ActiveX control allows EnvivioTV to be embedded into an HTML page rather than into a player.

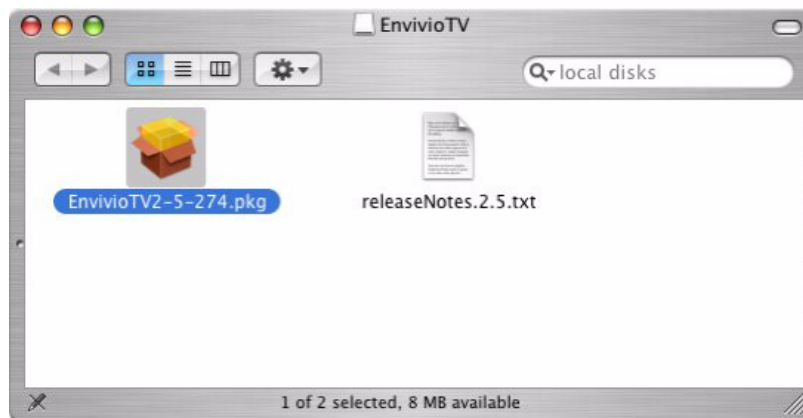
The EnvivioTV ActiveX control can be installed manually or automatically.

- The EnvivioTV ActiveX control is installed with EnvivioTV, whatever plug-in is selected. The installation is transparent to the user.
- The EnvivioTV ActiveX control can be installed automatically, if you select **Automatic installer** (see "Installing EnvivioTV with the ETV automatic installer" on page 47).

## Installing EnvivioTV for Mac player

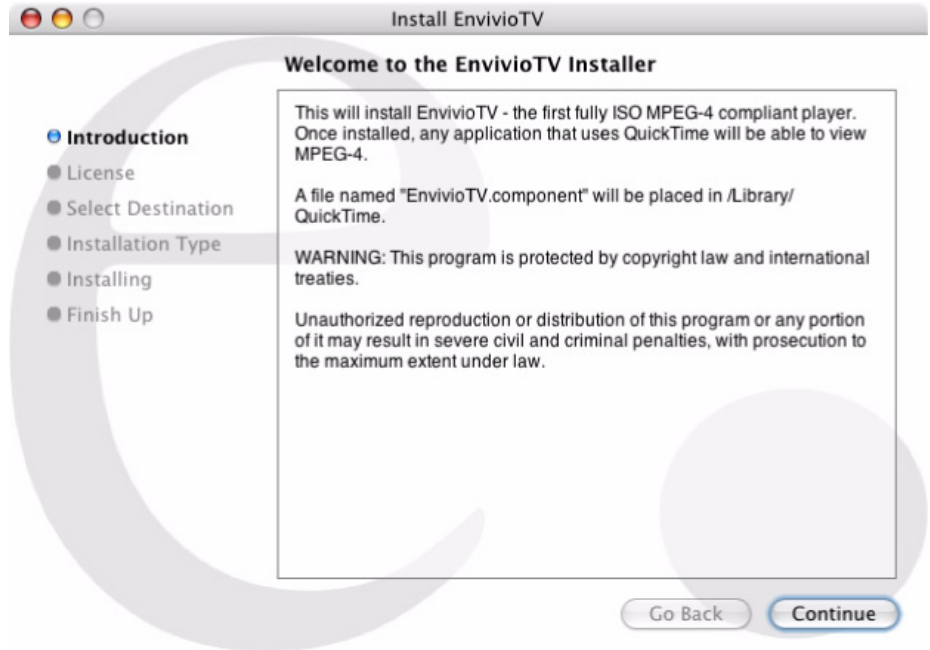
To install 4Forum on a Macintosh, follow these steps:

1. Double-click the **EnvivioTV-XXX.dmg**<sup>(1)</sup> file. Then, open the uncompressed package folder that contains the installer, **EnvivioTV-XXX.pkg** and the release notes, **ReleaseNotes-XXX.txt**.



1. Where *XXX* is the version number.

2. Double-click the **EnvivioTV-XXX.pkg** package file to start the installation.
3. Read and follow the online instructions given during the installation process.  
Click the Continue button to go to the next step.



4. At the end of the installation process a message informs you that 4Forum has been correctly installed on your system.

---

**NOTE**

By default, 4Forum uses the connection parameters specified in QuickTime™.

---

# Configuring Internet Explorer

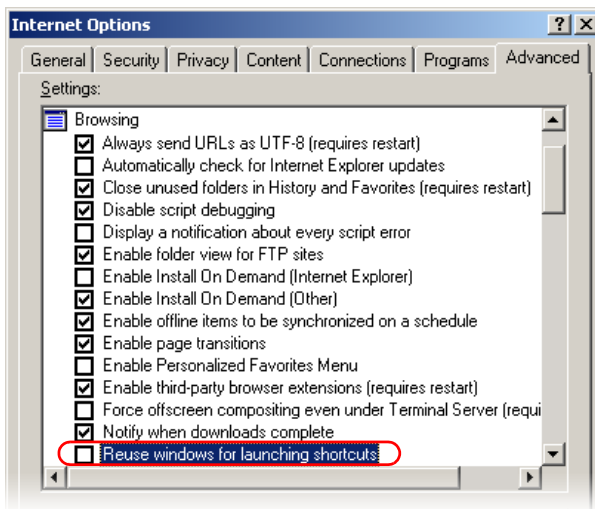
## CAUTION

Internet Explorer 6.0 is required for accessing the 4Forum Administrator interface.

Mac users should use Firefox 1.0 (or higher) to access 4Forum web interface.

1. In **Tools>Internet options>Advanced>Browsing**, uncheck **Reuse windows for launching shortcuts**. This option makes a web interface window always available and opens all links in another Internet Explorer window

Figure 3. Setting Internet options.



2. If you are using a proxy, go to **Tools>Internet options>Connections>Lan setting>Proxy server**, check **Bypass proxy server for local addresses**. Then click **Advanced**, and enter the 4Forum and the server IP address in **Exceptions field** (for example, 192.168.100.\*).

Figure 4. Setting proxy settings

