



The University of Texas at Austin
Environmental Science Institute

Hot Science - Cool Talk # 119

Save the...Sharks!?

Dr. Greg Stunz
April 12, 2019

Produced by and for *Hot Science - Cool Talks* by the Environmental Science Institute. We request that the use of these materials include an acknowledgement of the presenter and *Hot Science - Cool Talks* by the Environmental Science Institute at UT Austin. We hope you find these materials educational and enjoyable.

Save the... Sharks?!

Abundant predators are key to
healthy oceans!



HARTE
RESEARCH INSTITUTE
GULF OF MEXICO STUDIES



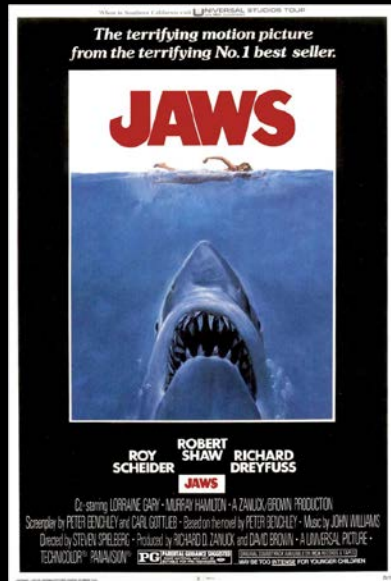
OCEARCHI
EDUCATE INSPIRE ENABLE



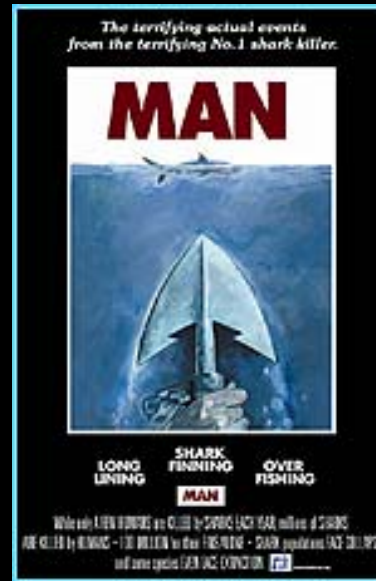
Are sharks really
this SCARY?



"Watson and the Shark" - Wikimedia Commons/John Singleton Copley 1778



MYTH



REALITY











Sharks in the Gulf...?



Sharks in the Gulf...?



- **What species?**
- **When do they occur?**
- **Why are they here?**
- **Migration patterns**









“Chancellor Shark”

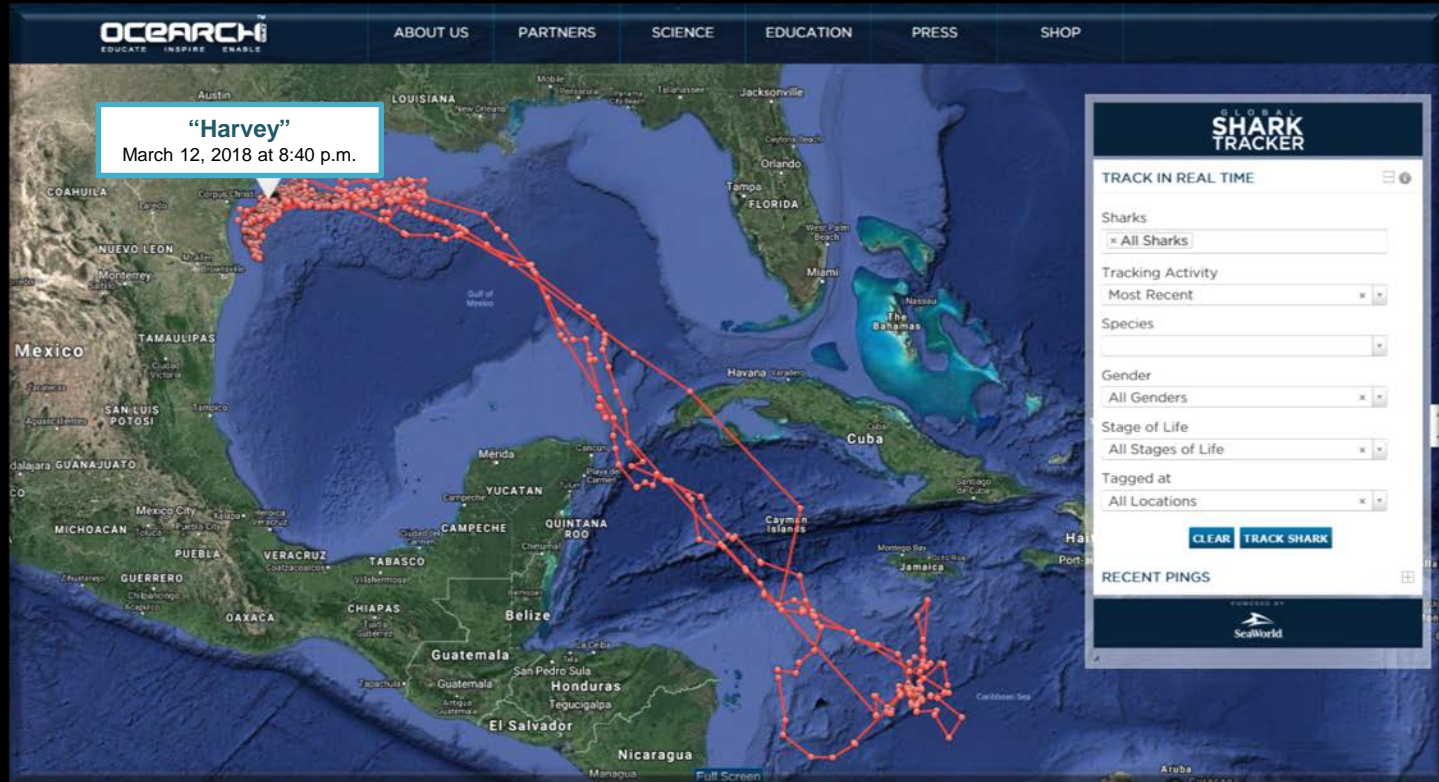
Chancellor Sharp



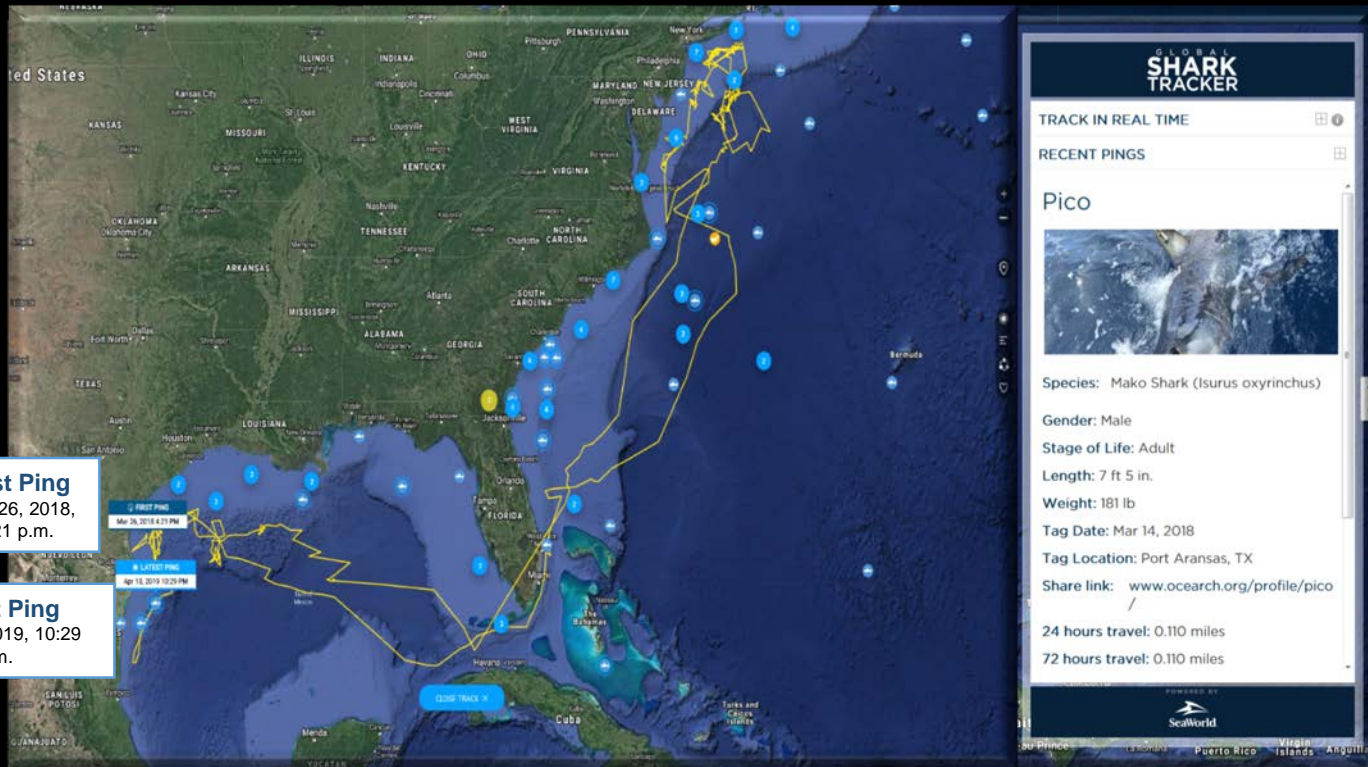
“Chancellor Shark” the Shortfin Mako Shark



“Harvey”



“Pico”



“Einstein”

The screenshot displays the OCEARCH website interface. At the top, the OCEARCH logo is accompanied by the tagline "EDUCATE INSPIRE ENABLE". A navigation menu includes links for ABOUT US, PARTNERS, SCIENCE, EDUCATION, PRESS, and SHOP. The main content area features a satellite map of the Gulf of Mexico coastline, with red dots and lines representing shark tracks. Two white boxes highlight "Galveston" and "Corpus Christi". A sidebar on the right is titled "GLOBAL SHARK TRACKER" and includes a "TRACK IN REAL TIME" section, a "RECENT PINGS" section, a profile for "Einstein" with a photo, a "Photos" gallery, and a "DONATE" button. The footer contains social media icons, a "SUPPORT" link, a language selection dropdown, an email input field, and a "Join the Conversation" button.





Key Discoveries:

- **Move throughout the basin and beyond**
- **Very seasonal and species-specific**
- **Gulf likely a breeding ground**
- **International management necessary**

Ambassadors for the Ocean!

Abundant predators are key to healthy oceans.

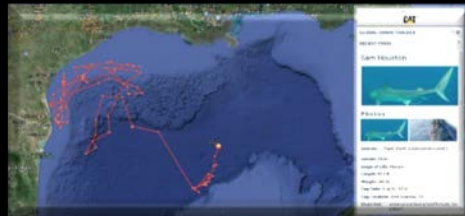


A Unique Collaboration

Center for
SPORTFISH SCIENCE
&
CONSERVATION

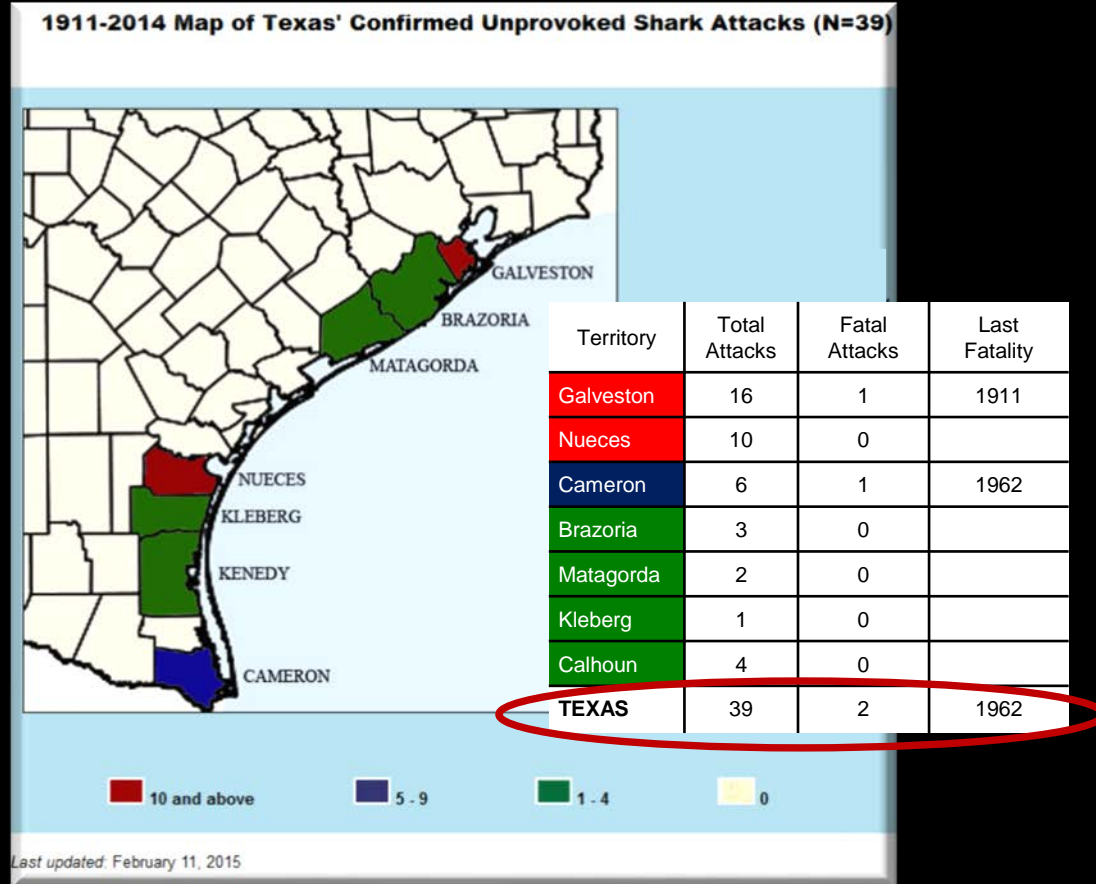


Shark Week: The Lost Cage





Will I be eaten by a shark... ?



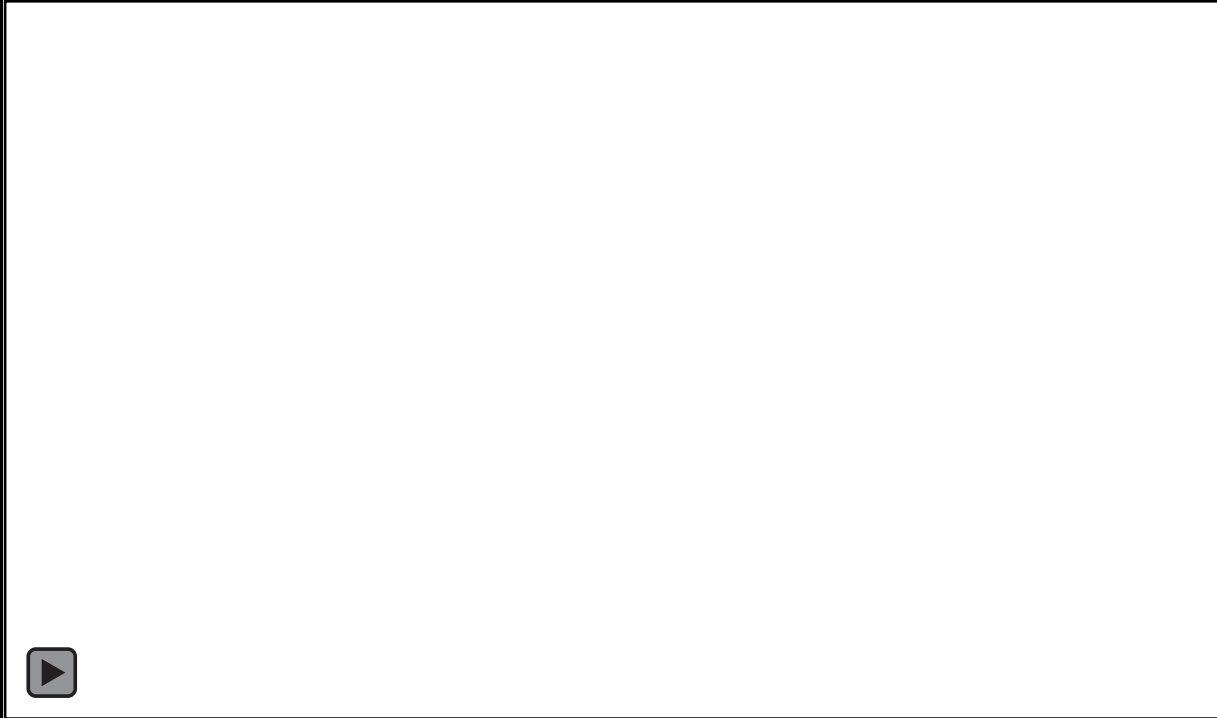


Sharks kill **5** people annually





Rethink the shark



Rethink the shark





Greg Stunz, Ph.D.
Director



PROFESSIONAL STAFF



Judd Curtis, Ph.D.
Research Scientist



Matt Streich, Ph.D.
Research Scientist



Jennifer Wetz, M.S.
Project Manager



Jason Williams, M.S.
Research Specialist



Tara Topping, M.S.
Research Specialist



Quentin Hall, M.S.
Research Specialist



Dannielle Kulaw, M.S.
Project Coordinator



Ashley Ferguson, B.S.
Research Tech



David Norris, B.S.
Research Tech

STUDENTS

Ph.D. Students



Kelsey Gibson, M.S.



Kelsey Martin, M.S.



Zach Olsen, M.S.

Master's Students



Jill Thompson-Grim, B.S.

Undergraduate Students



Jasmine Rodriguez
Research Tech

Cutting Edge People and Partners...



CCA



SIMRAD

