

A wide, turbulent river with muddy brown water and white foam from rapids. The water is in constant motion, creating a textured surface with many small waves and eddies. The color is a uniform, earthy brown, suggesting a high concentration of sediment.

WIMBERLEY STRONG

***2015 MEMORIAL DAY WEEKEND FLOOD
WIMBERLEY, TEXAS***

City of Wimberley Profile

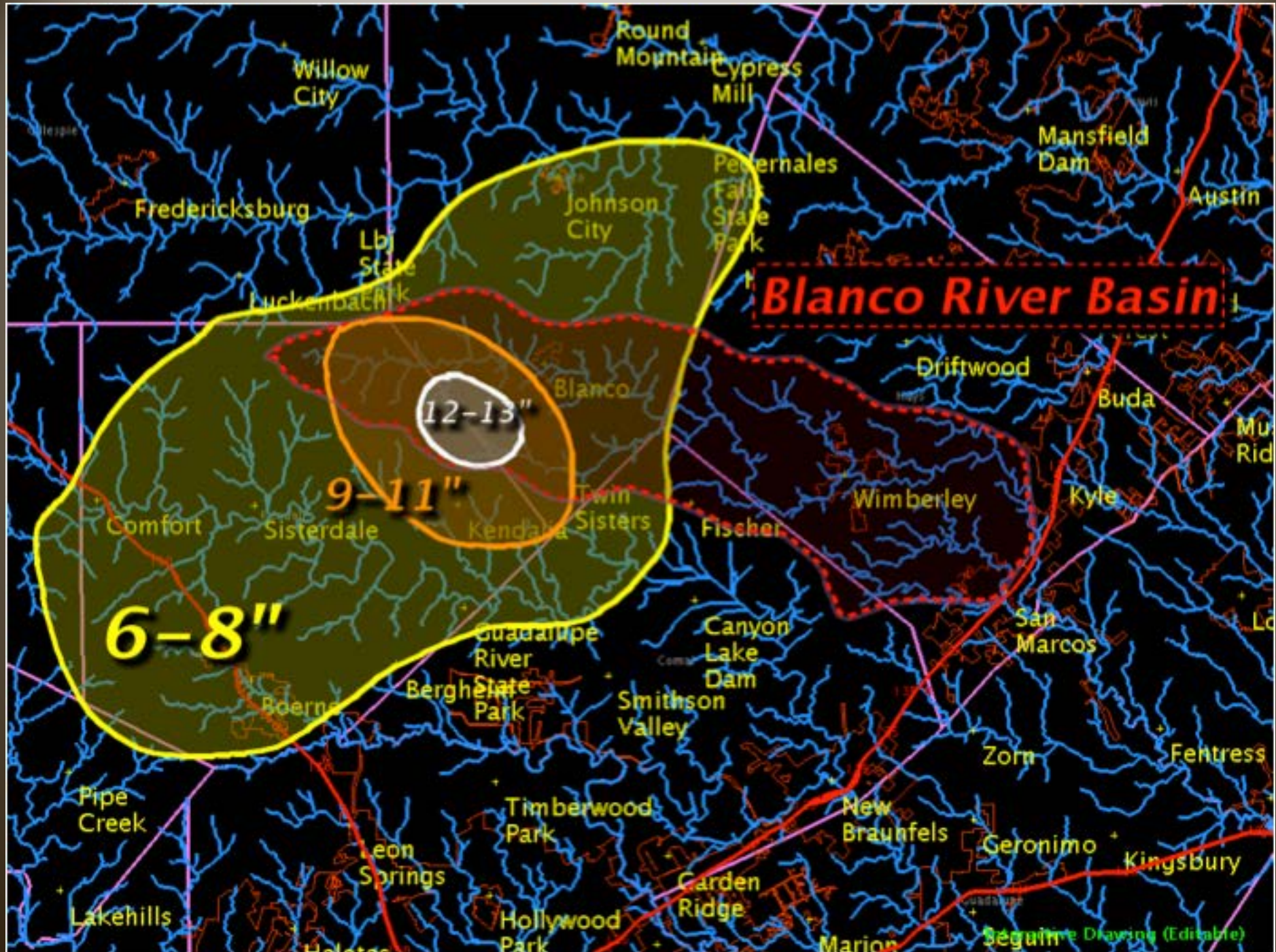
- **Population:** *2,626 residents*
- **Area:** *Nine (9) square miles*
- **Housing:** *Approximately 1,500 homes*
- **Economic Base:** *Tourist based economy*
- **Natural Resources:** *Blanco River and Cypress Creek*
- **Average Rainfall:** *39.5 inches per year*
- **City Brand:** *“Wimberley...A Little Bit of Heaven”*

Saturday, May 23, 2015

“...The day a community with “A Little of Heaven” met “A Little Bit of Hell”

Saturday, May 23, 2015

- **During the day, widespread showers and thunderstorms soaked the Wimberley Valley, dumping more than two (2) inches of rain**
- **Vastly different conditions were reported west of Wimberley in Blanco County**
- **Late in the afternoon, six (6) to eight (8) inches of rain fell near Blanco and ten (10) to twelve (12) inches of rain fell southwest of Blanco near the community of Kendalia**



Saturday, May 23, 2015

- “Old Timers” in Blanco County reported flood waters from the Blanco River going where they have never gone before and they were heading toward Wimberley
- Based on reports and historical knowledge of the Blanco River, the Wimberley Fire Department and City of Wimberley, in conjunction with Hays County Emergency Management, initiated a coordinated response to safeguard the more than 10,000 residents and visitors calling the Wimberley Valley “home” this long holiday weekend
- Protective actions were initiated more than two (2) hours before flood waters arrived

Saturday, May 23, 2015

- **Low water crossings over the Blanco River were gated**
- **River Road – a scenic heavily traveled roadway on the Blanco River – was closed**
- **City issued the first of three (3) city-wide phone calls to more than 1,500 households in the community warning of a significant rise on the Blanco River**
- **Fire Department gathered swift water rescue teams and prepared for deployment**
- **Door-to-door evacuations were initiated in vulnerable, low lying areas**

9-1-1 calls began to paint a picture
of what was to come....



In Wimberley, the Blanco River began to
“truly” rise around 9 p.m.



As the level of the Blanco River rose, so did the calls for help...

Dispatcher: Hays County 9-1-1. Do you need Police, Fire or EMS.

Caller: We just saw a car float by the low water crossing... we don't know if anyone was inside...

Dispatcher: Hays County 9-1-1. Do you need Police, Fire or EMS.

Caller: We need rescue. Water is coming the house and my parents are elderly...

Dispatcher: Hays County 9-1-1. Do you need Police, Fire or EMS.

Caller: We need emergency rescue. The river has flooded around the house...we are running out of breathing room...hurry.



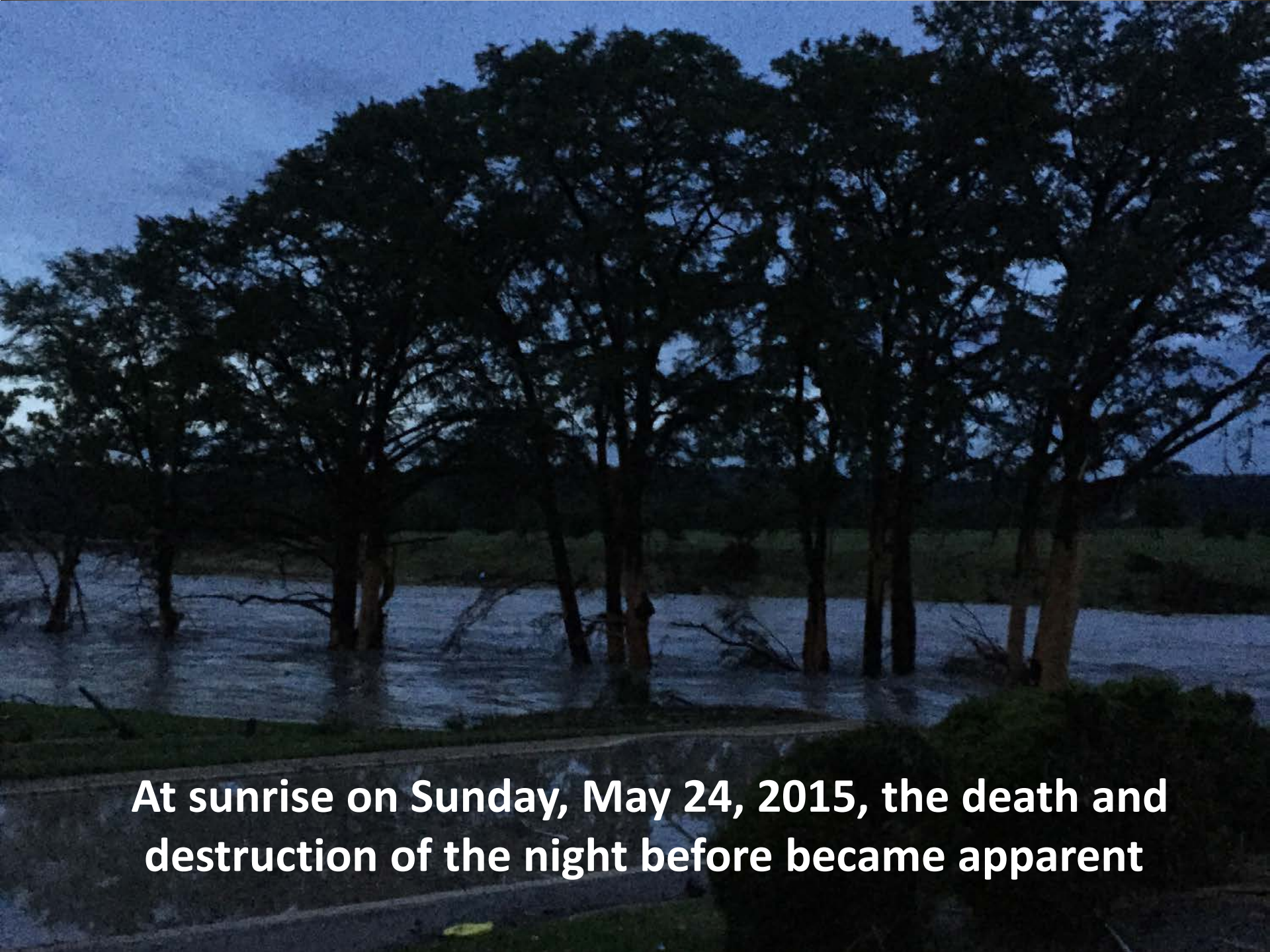
Saturday, May 23, 2015

- **In four (4) hours, the Blanco River in Wimberley rose from 5' feet to near 41'**
- **At one point, the Blanco River was rising at a rate of 5' every fifteen (15) minutes**
- **Flood waters topped the Ranch Road 12 Bridge over the Blanco River at Wimberley by 4'**
- **As the Blanco River rose, tributaries such as the Cypress Creek and Wilson Creek, quickly back filled with flood waters**

As residents and visitors fled to higher ground, debris-laden flood waters quickly filled and shattered homes and claimed 11 lives in its path







At sunrise on Sunday, May 24, 2015, the death and destruction of the night before became apparent



































RS/MK
Wimberly

FOR SALE
Commercial C-1
Blanco River Corridor



Flood waters took more than homes and lives











Flood waters took a toll on local roads, bridges and low water crossings



Fischer Store Bridge



FM 165 Bridge





Ranch Road 12 Bridge

Hidden Valley Low Water Crossing

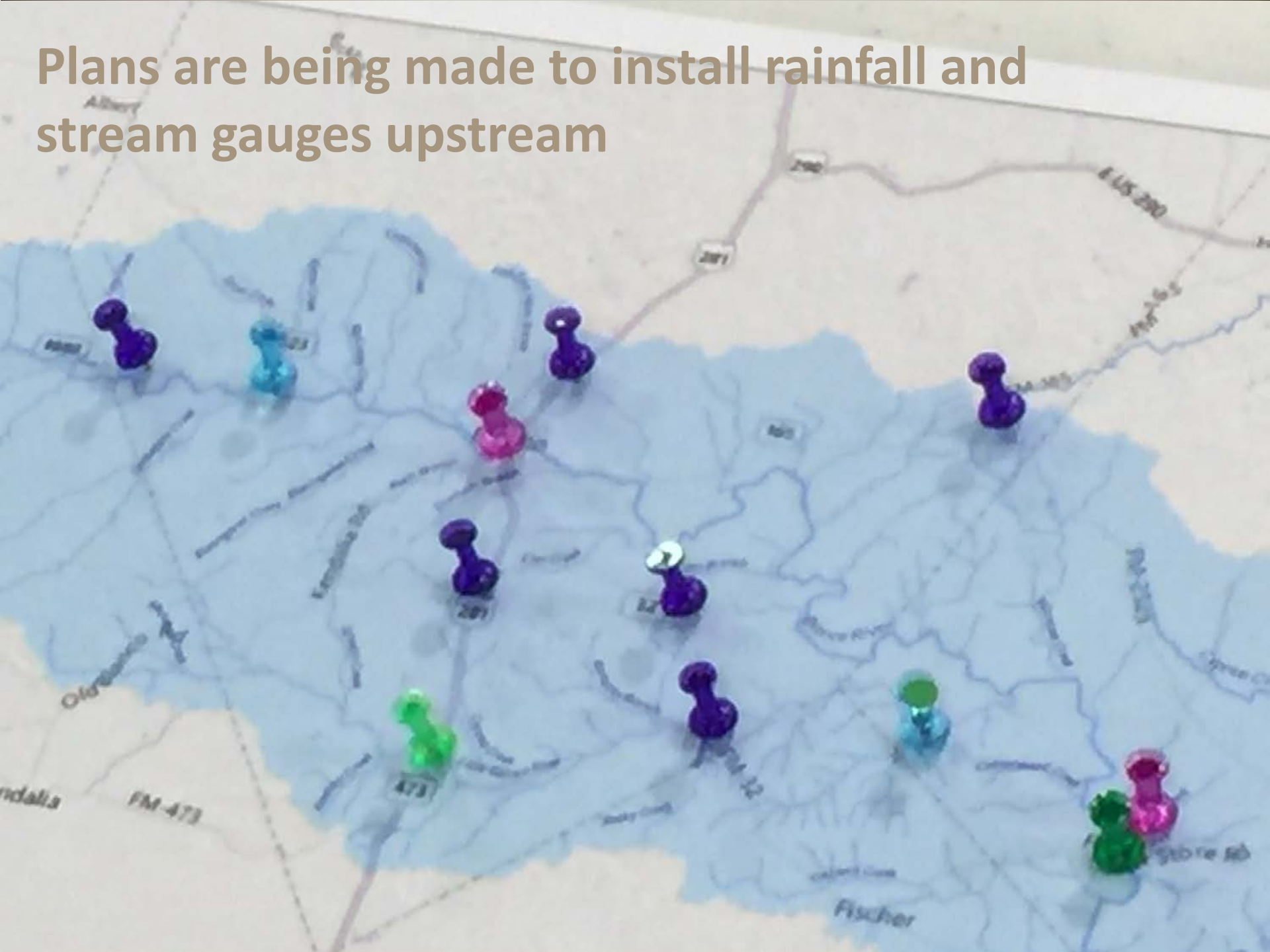






What's next for Wimberley...

Plans are being made to install rainfall and stream gauges upstream





**Reconstruction of flood damaged
homes is underway**

MEMORIAL DAY WEEKEND FLOOD WIMBERLEY, TEXAS

- + Eleven (11) lives lost**
- + More than 100 swift water rescues**
- + 350 homes damaged or destroyed**
- + More than 15,000 trees lost**
- + Estimated property damage more than \$30 million**
- + Record flood height of 44.9 feet**
- + 195,000 acre feet of water passed through Wimberley**
- + This amount of flood water would have filled AT&T Stadium 82 times**
- + More than 6,000 volunteers put in more than 400,000 hours of time**

